

# Discover and visualize

correlations in large amounts of data



Evince is a new generation software for analyzing large amounts of data with multivariate methods. With powerful visualization tools, correlations within the data are easily found. The built-in interaction makes it possible to detect connections between original data and final visualizations. Evince lets the user discover interesting correlations in an efficient way and export state-of-the-art graphics to reports and presentations.

#### ▶ Data import

Intuitive import of common data files such as xls and txt. Automatic detection of data observations and variables.

#### ▶ Overview and connections

Imported and calculated data is arranged in a hierarchical tree which gives a clear overview. The connections between data tables and graphic representations are evident due to built-in visible interactions.

#### ▶ Multivariate analysis

Analysis of imported data is performed with PCA and PLS. Original data is compressed to a few significant components. Models are instantly updated when for example there is a need for excluding observations or variables.

#### ▶ Module based design developed in Java

Evince is quickly adapted to user needs. Versions of Evince exist for Windows, Mac and Linux.

#### ▶ Powerful visualizations

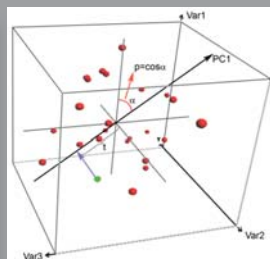
Visualization of data in 2D and 3D. Plots are easily modified with a handy settings panel. Visualizations are readily exported to reports and presentations.

#### ▶ Competitively priced

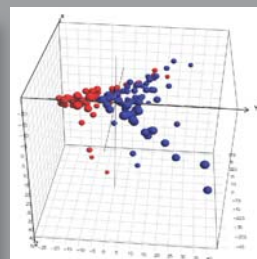
Licenses of Evince can be obtained at a competitive price. UmBio also offers support in software and multivariate analysis.

| 1  | 2      | 3      | 4    |
|----|--------|--------|------|
| 1  | 1.8399 | 1.9    | 1.96 |
| 2  | 1.26   | 1.3    | 1.33 |
| 3  | 1.42   | 1.45   | 1.5  |
| 4  | 2.05   | 2.15   | 2.21 |
| 5  | 1.82   | 1.87   | 1.93 |
| 6  | 1.76   | 1.82   | 1.87 |
| 7  | 1.63   | 1.69   | 1.72 |
| 8  | 2.05   | 2.15   | 2.22 |
| 9  | 1.6099 | 1.68   | 1.69 |
| 10 | 1.89   | 2.08   | 2.11 |
| 11 | 1.74   | 1.77   | 1.78 |
| 12 | 1.93   | 1.96   | 1.98 |
| 13 | 1.56   | 1.6099 | 1.63 |
| 14 | 1.85   | 1.88   | 1.89 |
| 15 | 1.83   | 1.85   | 1.87 |
| 16 | 1.5    | 1.51   | 1.52 |
| 17 | 1.99   | 2.02   | 2.04 |
| 18 | 2.3    | 2.35   | 2.39 |
| 19 | 1.85   | 1.87   | 1.89 |

Original raw data...



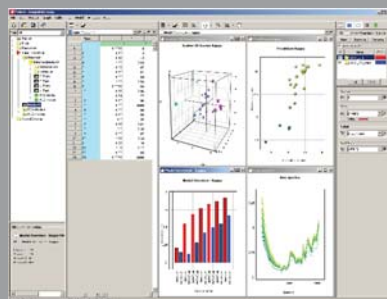
...is compressed with multivariate analysis...



...to state-of-the-art visualizations!



UmBio AB | Box 7978  
SE-907 19 Umeå, Sweden  
Phone: +46 (0)90-15 48 59  
Fax: +46 (0)90-15 48 67  
info@umbio.com



System requirements for Windows:  
Java Runtime Environment 1.5 or later  
Pentium II (1GHz CPU recommended)  
256 MB RAM (512 MB recommended)  
1024x768 screen resolution  
40 MB free drive space