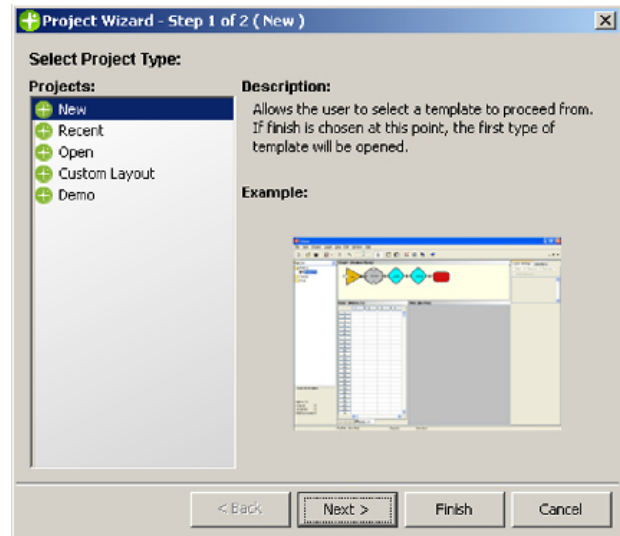


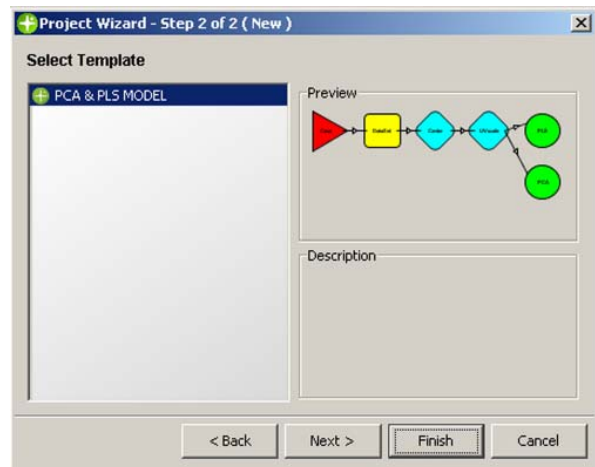
1. Project Wizard step 1

The Project Wizard opens automatically when Evince is started. The first step lets the user create a new project or open existing ones. The user may also create a custom project layout or view a demo. Selecting “New Project” from the file menu within the program is equivalent to selecting “New” in this step.



2. Project Wizard step 2

Different versions of Evince contains different templates. This version offers PCA & PLS MODEL, which is used for creating multivariate models.



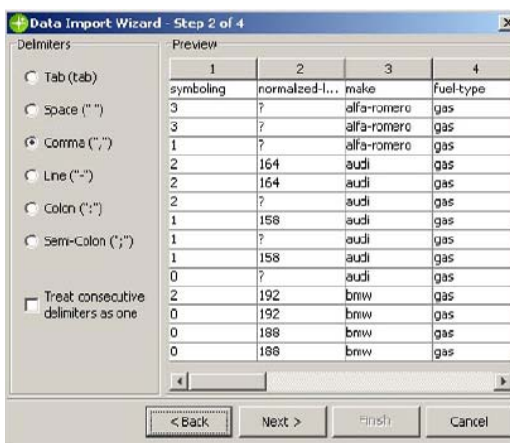
3. Data Import Wizard step 1

After choosing a template, the user enters the Data Import Wizard and can browse for a data set to import. Evince supports txt, xls and sdf files.



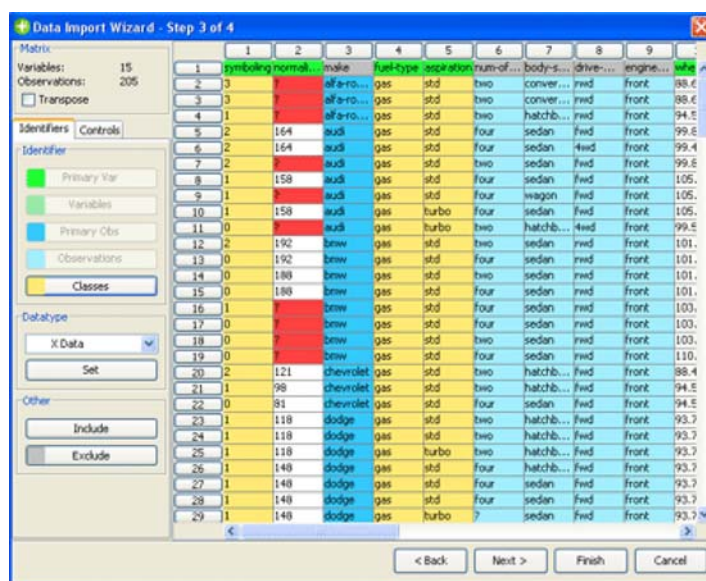
4. Data Import Wizard step 2

The second step in the import is for choosing the appropriate data delimiter. Most of the time, Evince will automatically detect which delimiter to use. If an incorrect delimiter is chosen, the user can change the delimiter manually.



5. Data Import Wizard step 3

This step lets the user view the entire data set and perform modifications on it. The buttons under the “Identifiers” tab are used for setting selected rows or columns to observation identifiers, to variable identifiers or to classes. There is also a button for setting the data to X, Y or Smiles (Simplified Molecular Input Line Entry System). Above these buttons, there is a check-box for transposing the imported data set.



6. Data Import Wizard step 4

The last step of the data import is used for naming the project and for choosing what items to be created when finishing the import. The only item created by default is the “data set table”. The user can choose to add a regular table of the imported data and to automatically add a multivariate PCA or PLS model. The latter also creates four common plots for the created model. Please note that in the previous step, at least one variable should be set to Y, in order for a PLS model to be created.

At the bottom there is an option for linking the imported data set to a file. This means all calculations will be performed from the file and if any data is updated, this will update the file as well. Clicking on “Finish” will exit the Data Import Wizard and Evince will start. For more help on how to use Evince, please see the built-in help section in the main menu. Good luck!

